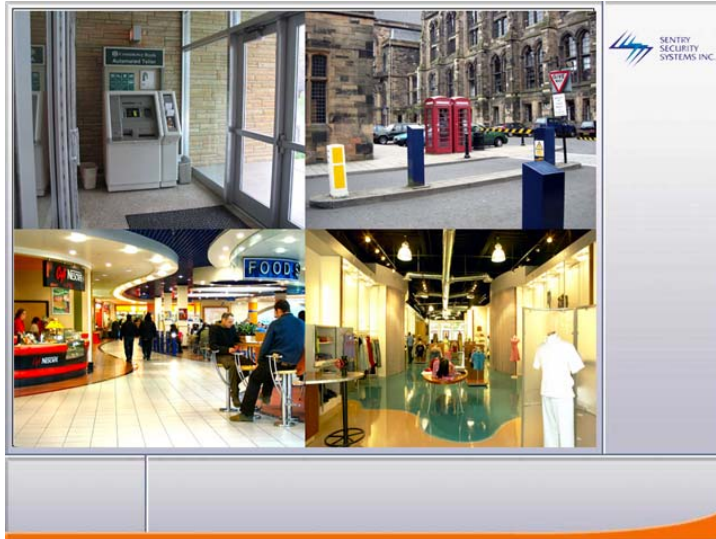




Sentry LE and LE-HC Series (Embedded DVRs)

Reliable, easy-to-use, 4-16 Channels



Features

- 4/8/12/16 channel Linux-based embedded digital video recorders
- Embedded software/OS (no software on hard disk), for maximum reliability
- Simple, plug & play installation
- Infra-red remote control, on-screen programming or mouse/keyboard control
- Manages storage and recycles space automatically
- Simultaneous viewing, recording, playback and remote access
- Remote access by LAN, internet and dial-up are supported by standard browser
- Easy-to-use back-up to DVD-RW/CD-RW drive is provided for critical events
- Upgradeable, scalable design
- Record and display transaction data from your POS System

Description

The Sentry LE and LE-HC Series of embedded DVRs use a different architecture to PC based DVRs. The operating system and DVR software are contained as read-only firmware on a chip. Therefore, they have no software on the hard drive to corrupt and cannot be attacked by viruses, for maximum reliability.

They support from 1-16 security cameras and provide an easy-to-use, excellent video quality surveillance solutions. Operation can be accomplished by IR remote controller (comparable to a TV or VCR), as well as by mouse, providing a comfortable "feel" for users with or without PC experience. In addition, these DVRs can be accessed remotely over the Internet or LAN. This ability to view live and/or recorded video from remote locations using a standard PC allows people to easily keep an eye on their premise(s) no matter where they are.

The LE-HC Series of DVRs functions similar to the standard LE Series, however, it features MPEG4 hardware compression/decompression. Since local compression/decompression are performed using hardware instead of software, system resources are greatly reduced providing recording speeds of up to 30fps/camera (real-time) and one channel of audio recording per video channel.

Various models of PTZ cameras can be controlled through the software, both locally and remotely, using an add-on adapter. Use the Sentry PT23DN-AT-OD if you need a solution that will track moving objects and send alarm signals with or without human interaction.

An excellent add-on to a Sentry LE or LE-HC video security system is the LE Data Capture. It can record and display transaction data from a POS System (cash register). The data from each transaction is then directly overlaid onto the video and a searchable database is created allowing abnormal transactions to be pinpointed on video. This device helps lower inventory and cash shrinkage, ensures a safer environment for employees, enhances loss prevention, and provides powerful search features to facilitate business management.

Sentry Security Systems Inc.

1-1257 Midland Ave - Kingston, Ontario K7P 2Y1 Canada

Web: www.sentry-resellers.com | www.cctvsentry.com

Phone: 866.736.8796 | Fax: 613.384.1733 | Email: sales@cctvsentry.com



SENTRY LE DVR SPECIFICATIONS		
Model	LE/04	LE/08, LE/12, LE/16
Software	Hardware embedded Linux-based operating system and software.	
Hardware	320GB (expandable) hard drive	320GB (expandable) hard drive
	DVD-RW/CD-RW drive, 10/100 LAN adapter, Infra-red remote controller, and mouse.	
Video Compression	H.263, MPEG4, MJPEG, JPEG (H.263 compressed frames are 1/7 th the size of JPEG and use less processing power than MPEG4. H.263 frames at 320x240 resolution average 2KB yet provide superior video quality.)	
Video Inputs	4, 8, 12, 16	
Audio Inputs	1	
Recording Resolution	320x240, 640x480	
Event Recording	Video motion, scheduled recording or continuous	
Recording Speed	Up to 120fps	
Monitor Output	1 VGA Port	
Remote Access	Internet, Intranet and direct dial-up	
Hard Disk Usage (MPEG4 @ 320x240)	4 cameras at highest quality and 1 audio channel = 48 GB for 24 Hours	
Weight	25 lbs	
Options	Rackmount Case Additional and/or larger hard drives External modem PTZ protocol converter 4 in/4 out alarm input/output module POS text overlay	
Standard Warranty	1 year parts and labor, 1 year toll free technical support. Extended warranties available.	

SENTRY LE-HC DVR SPECIFICATIONS		
Model	LE-HC/04, LE-HC/08, LE-HC/12, LE-HC/16	
Software	Hardware embedded Linux-based operating system and software.	
Hardware	320GB (expandable) hard drive	
	DVD-RW/CD-RW drive, 10/100 LAN adapter, Infra-red remote controller, and mouse.	
Video Compression	MPEG4 Hardware Compressed	
Video Inputs	4, 8, 12, 16	
Audio Inputs	1 per video input	
Recording Resolution	360x240, 720x480	
Event Recording	Video motion, scheduled recording or continuous	
Recording Speed	30fps per camera (Real-time)	
Monitor Output	1 VGA Port	
Remote Access	Internet, Intranet and direct dial-up	
Hard Disk Usage (MPEG4 @ 360x240)	4 cameras at highest quality and 1 audio channel = 36 GB for 24 Hours	
Weight	25 lbs/45lbs.	
Options	Additional and/or larger hard drives. External modem. RS485 to RS232 PTZ protocol converter. 4 in/4 out alarm input/output module. POS text overlay.	
Standard Warranty	1 year parts and labor, 1 year toll free technical support. Extended warranties available.	

Prices and specification may change without prior notification. Please contact a sales representative for the latest information. The information contained in this document is confidential. Any use, reproduction or distribution must have prior consent from Sentry Security Systems Inc.

Sentry Security Systems Inc.

1-1257 Midland Ave - Kingston, Ontario K7P 2Y1 Canada

Web: www.sentry-resellers.com | www.cctvsentry.com

Phone: 866.736.8796 | Fax: 613.384.1733 | Email: sales@cctvsentry.com