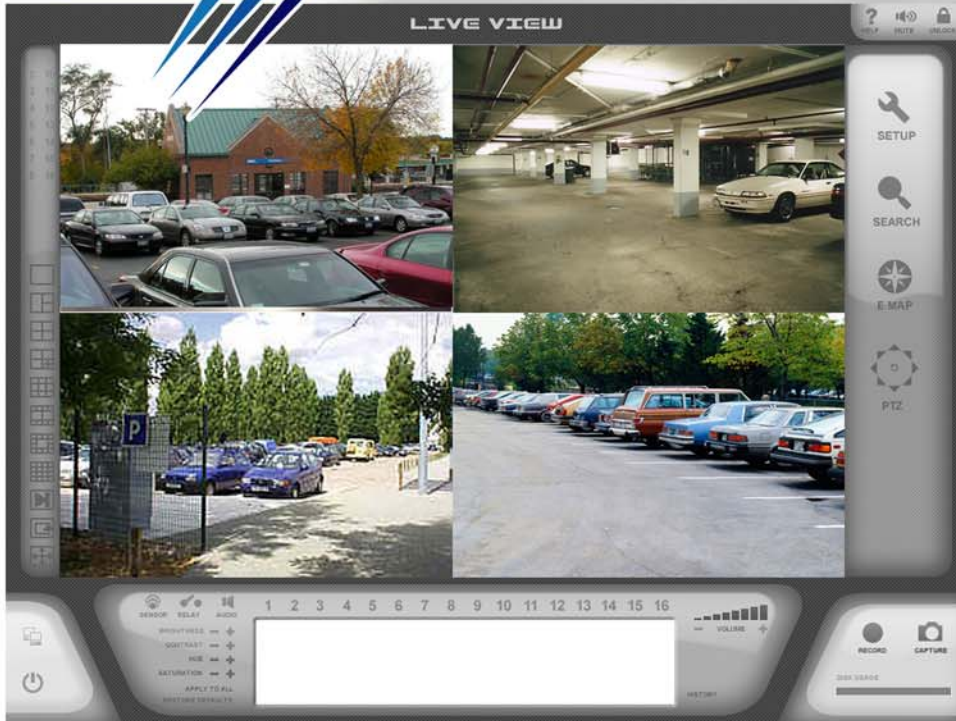


Fully Supported. Superior Performance. Lower Cost

Sentry LP Series DVR



- **Real-Time**
- **Highly Reliable**
- **Linux-based OS**
- **Up to 32 Cameras**
- **Hardware Compressed**
- **Simple-To-Use**
- **Remote Access**
- **Hybrid Capable**

The Sentry LP Series offers a unique blend of vital features, high speed and superb quality video. This blend of features is contained in a real-time, MPEG4 hardware-compressed DVR, built with ease-of-use, reliability and simplicity in mind. By integrating a Linux operating system, commercial-grade PC components and hardware compression, you can be assured that the LP will satisfy your needs for both cost and performance.

*Hybrid Capable: The Sentry LP Series are available in two hybrid configurations:
LP-Hybrid/16: 8 analog + 8 IP
LP-Hybrid/32: 16 analog + 16 IP

Included with all Sentry LP Series DVRs, the remote client software is an integrated security management system that provides both local and remote access to live and recorded video and all system settings, under password control. Video from multiple LP Series DVRs can be viewed and recorded on one remote PC. Remote access via a standard Internet browser is also built-in and provides a simple interface to view live video, control PTZ cameras and capture still images. Some important features are:

- Real-time streaming video and audio
- Multiple display modes
- Snapshot and image enhancement functions
- Sensor/Relay/Audio control
- PTZ camera control
- Remote video search and playback
- Remote DVR setup

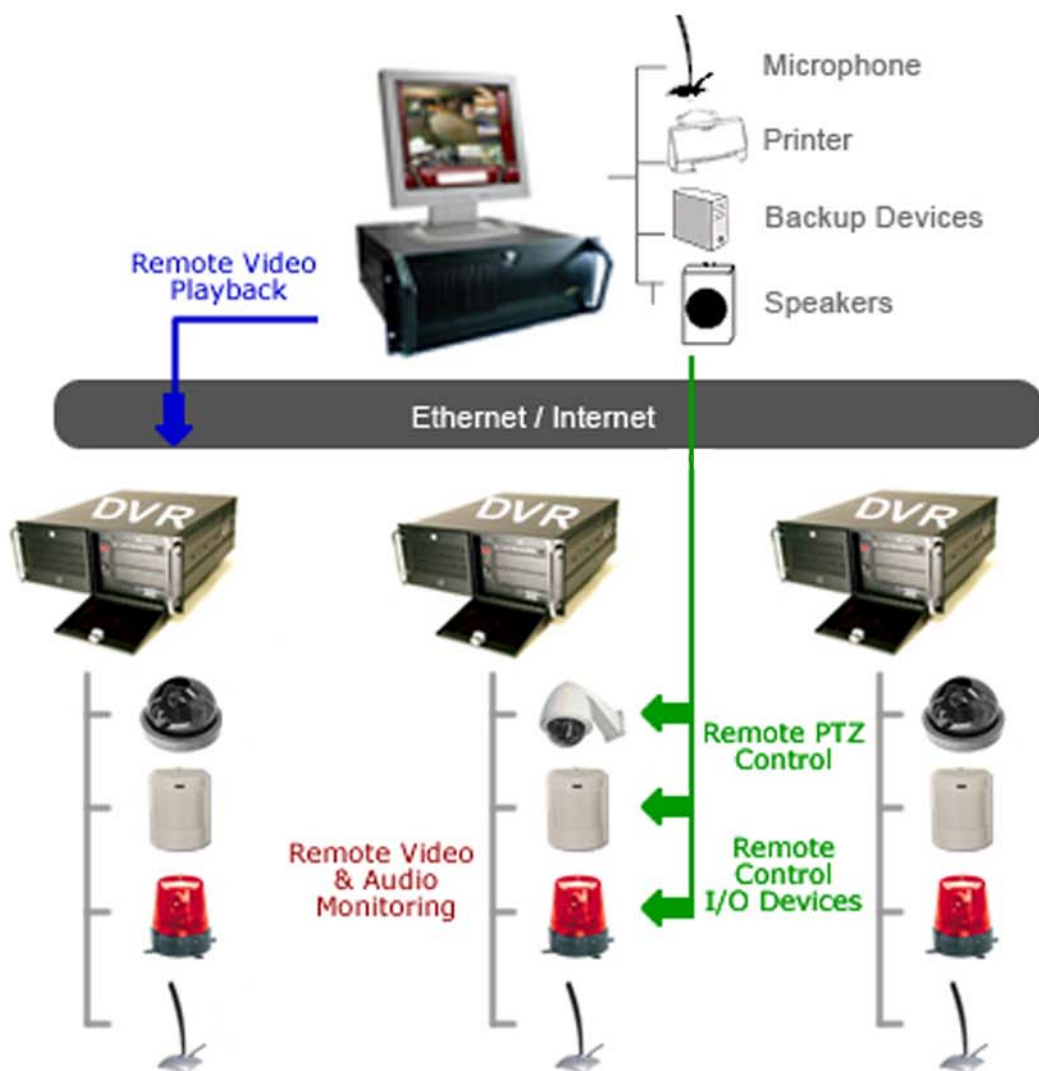
Live Demo: <http://205.210.53.103>
(User: guest | Password: guest)

Call Sentry to speak with a Digital Video Security Specialist.

1.866.736.8796

www.sentry-resellers.com | www.ctvsentry.com

Fully Supported. Superior Performance. Lower Cost



SENTRY LP DVR SPECIFICATIONS				
MODEL	LP/04	LP/08	LP/16	LP/32
Chassis	Compact, Rugged Case			
Video Inputs	4	8	16	32
Audio Inputs	4	8	Up to 16	Up to 32
Video Compression	MPEG4 (Hardware Compressed)			
Recording Resolution	360x240, 720x240, 720x480			
Total Recording/Display Speed	120 frames/sec	240 frames/sec	480 frames/sec	960 frames/sec
Remote Access	TCP/IP			
Event Recording	Video motion, alarm sensing, record schedule, continuous			
Monitor Output	1 SVGA Port			
Hard Disk Usage (Continuous recording, 30fps, Medium quality, 360x240)	Approximately 22GB/day	Approximately 44GB/day	Approximately 88GB/day	Approximately 176GB/day
Video Backup Device	DVD-RW/CD-RW drive			
Standard Storage (upgradeable)	320GB		500GB	1TB (1000GB)
Standard Warranty	1 year parts and labor, 1 year toll free technical support. Extended warranties available.			

Call Sentry to speak with a Digital Video Security Specialist.

1.866.736.8796

www.sentry-resellers.com